

# QUIZIZZ

## Topographic maps

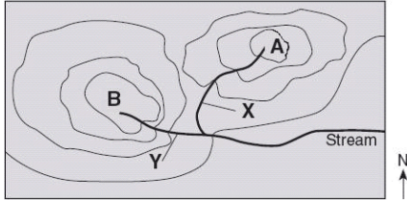
11 Questions

NAME : \_\_\_\_\_

CLASS : \_\_\_\_\_

DATE : \_\_\_\_\_

1.



Which direction is the stream flowing?

a) northward

b) southward

c) westward

d) eastward

2.

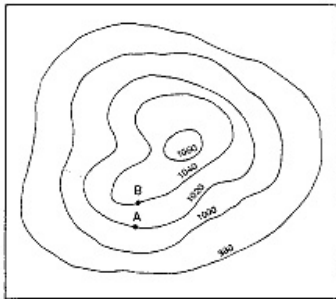


Figure E-1: Isolated Hill

What is the highest elevation this hill could possibly have? (might not be labeled)

a) 1040

b) 1060

c) 1079

d) 1009

Help

3.

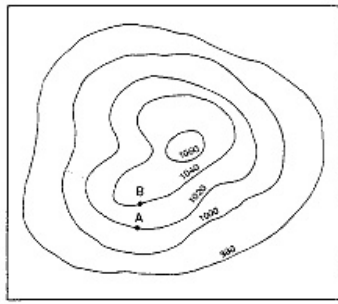


Figure E-1: Isolated Hill

What is the contour interval on this map?

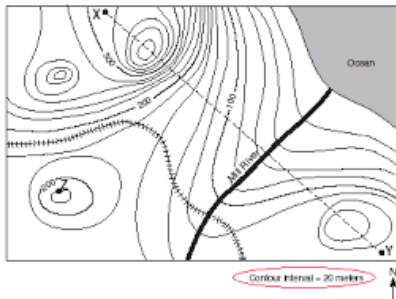
a) 100

b) 10

c) 15

d) 20

4.



How many peaks are on the map? (hill tops)

a) 4

b) 3

c) 2

d) 1

5. It is steep on a topographic map where \_\_\_\_\_.

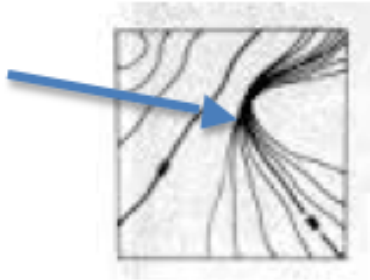
a) lines are closest together

b) a river flows into a lake

c) contours bend

d) contours are far apart

6.



What feature is at the arrow?

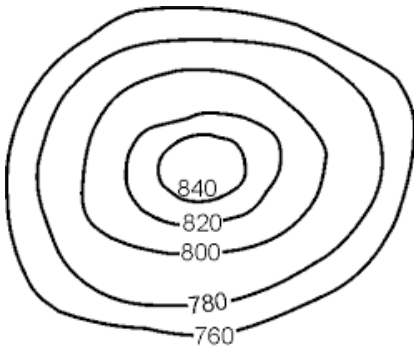
a) volcano

b) mountain

c) cliff

d) river

7.



Determine the contour interval:

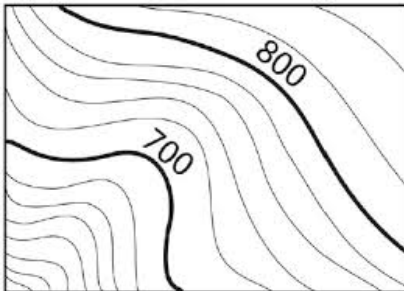
a) 5 m

b) 10 m

c) 15 m

d) 20 m

8.



What are the darker lines called?

a) roads

b) index contour

c) contour interval

d) waves

9.



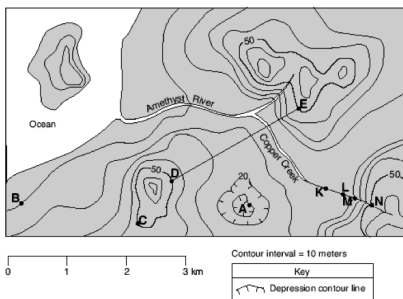
What is the contour interval of the topographic map below?

- a) 400 m
- b) 200 m
- c) 100 m
- d) 80 m

10. What do contour lines that are farther apart represent?

- a) waterfall
- b) steep area
- c) gentle slope
- d) river

11.



If we were in a plane, Path B --> C is about the same distance as path E --> N. But, which path is the easier walk?

- a) B --> C is the easier walk
- b) E --> N is the easier walk
- c) B --> C and E --> N are the same walking distance

## Answer Key

- 1. d
- 2. c
- 3. d

- 4. a
- 5. a
- 6. c

- 7. d
- 8. b
- 9. d

- 10. c
- 11. a