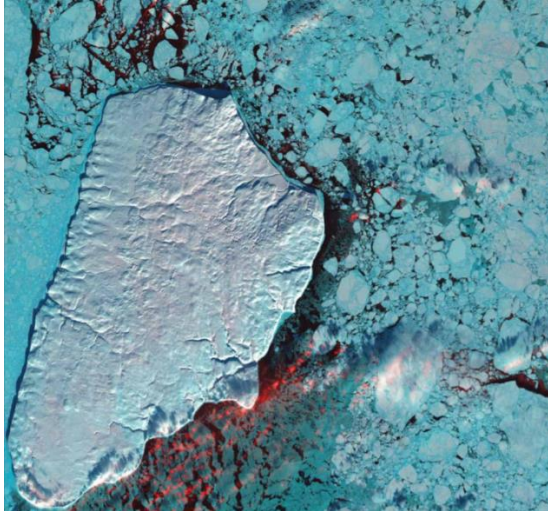


EARTH AS ART PROJECT

<http://earthasart.laneworks.net/>

<https://www.npr.org/sections/pictureshow/2013/02/20/167654990/earth-as-art-how-did-nature-do-that>

https://www.nasa.gov/pdf/703154main_earth_art-ebook.pdf



Akpatok Island Canada

Akpatok Island rises sharply out of the frigid water of Ungava Bay in northern Quebec, Canada. Composed primarily of limestone, the island is a flat, treeless plateau 23 kilometers wide, 45 kilometers long, and about 150 to 250 meters high. This 2001 Landsat 7 image shows Akpatok Island completely covered in snow and ice. Small, dark patches of open water appear between pieces of pale blue-green sea ice, and a few scattered clouds are shown in red. The surrounding sea and ice are home to polar bears, walrus, and whales. A traditional hunting ground for native Inuit people, Akpatok is almost inaccessible except by air. The island is an important sanctuary for seabirds that make their nests in the steep cliffs that circle the island.